

业鹏机械公司介绍

Introduction to Ye Peng Machinery

2016/08

公司简介

Introduction to Ye Peng

一、公司概况 Company Overview

佛山市业鹏机械有限公司，前身广成机械厂成立于 1992 年。公司拥有专业的质量管理团队、齐全的检验工具及仪器，自 2004 年起获得 ISO9001 质量管理体系认证，依据标准从原料采购到成品出库，均执行严格的品质控制。在组织管理方面，公司多年来积极引入国内外先进管理理念，全面推行流程管理，并实施了 ERP 企业资源计划、6S 现场管理及 HR 信息化管理。另外，公司对技术研发工作亦尤为重视，已获国家知识产权局授权多项发明及实用新型专利，系中国电器科学研究院指定研发基地，亦为在建的佛山市三水区机器人设备工程技术研究中心。

Foshan Ye Peng Machinery Co., Ltd., previously known as Guang Cheng Machinery Factory, can be dated back to 1992. Ye Peng has a professional team for quality control and applies all sorts of inspection instruments. It has been certified to ISO 9001 Quality Standard since 2004. Starting from material purchasing to the finished goods checkout, we strictly implement the quality control in accordance with the Standard. In terms of management, we actively take in advanced concepts from home and abroad. We implement Process Management, Enterprise Resource Planning, 6S Onsite Management and HR Information System Management. In addition, Ye Peng pays much attention to R&D. It has been granted multiples inventions and utility models by the State Intellectual Property Office of China, and appointed as the China National Electric Apparatus Research Institute. Ye Peng is also working on the Sanshui Foshan Engineering Research Center for Robotic Equipment.



二、生产设备 Production Facilities

拥有各类配套的加工设备约 600 台套，其中有自行设计制造的专用设备，和不断引进的先进生产设备，综合加工能力可满足各种零部件从开料到涂装所有工序的加工和制造。

Ye Peng owns around 600 sets of processing equipment for different functions, including those developed in-house, as well as those introduced from external. All of them help contribute to a strong processing capacity, satisfying our processing needs all along the working procedures from raw materials cutting to finish treatment.



三、业务范围 Scope of Business

1. 生产通用的码垛机器人、智能钻石加工机械系列等产品。
2. 承接专用机械设备系统的设计制造集成，为客户提供整体解决方案。
3. 提供加工制造服务，常规 OEM 产品包括：
 - 小型集装箱及配套提升机
 - 各类型钢结构部件及五金制品：①建筑机械类零部件；②立体车库零部件；③自行车停车装置；④建筑型模系列；⑤纸浆设备零部件；⑥饲料机零部件等。

1. Produces general machinery products for different industries, such as Robot Palletizer, Diamond Intelligent Processing Machinery Series and etc.;
2. Designs, manufactures and integrates special mechanical equipment systems, providing overall solutions for clients;
3. Offers manufacturing services for clients, and routine OEM products include:

- Portable Storage Units and the Associated Elevators
- Various Types of Steel Parts and Hardware Products: ①Constructions Machinery Parts; ②Stereo Garage Parts; ③Bicycle Parking Device; ④Construction Formwork Series; ⑤Pulp Equipment Components; ⑥Feed Machinery Components, etc.



经营理念

Business Philosophy

让客户获得价值
More Value for Customers
让伙伴共同发展
Mutual Development with Partners
让员工不断进步
Continuous Improvements for Staff
让生活更加美好
Better Life for All of Us

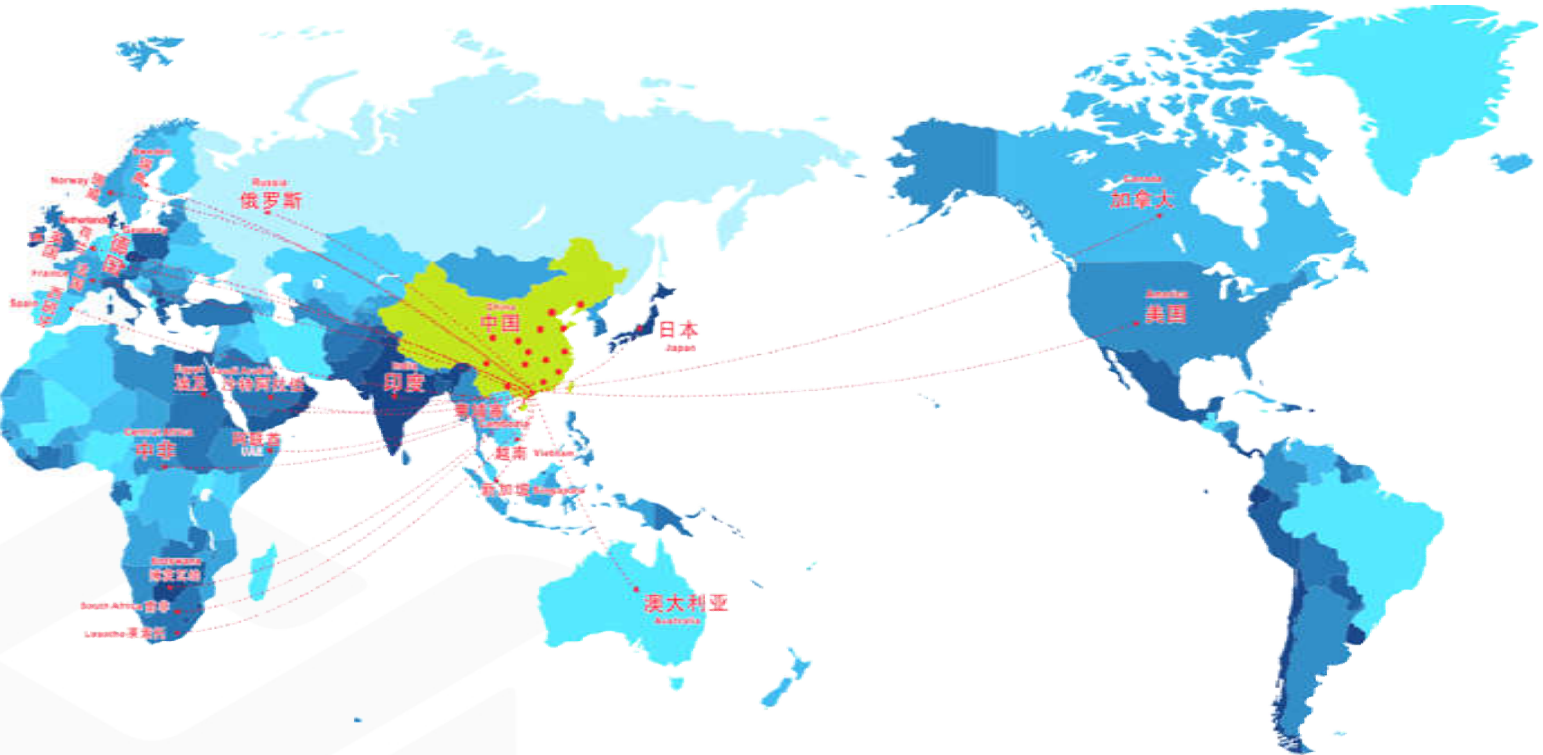
质量方针

Quality Guidelines

环环控制
Control over All Aspects
人人参与
Full Involvement of Everyone
持续改进
Continuous Improvement
顾客满意
Customer Satisfaction

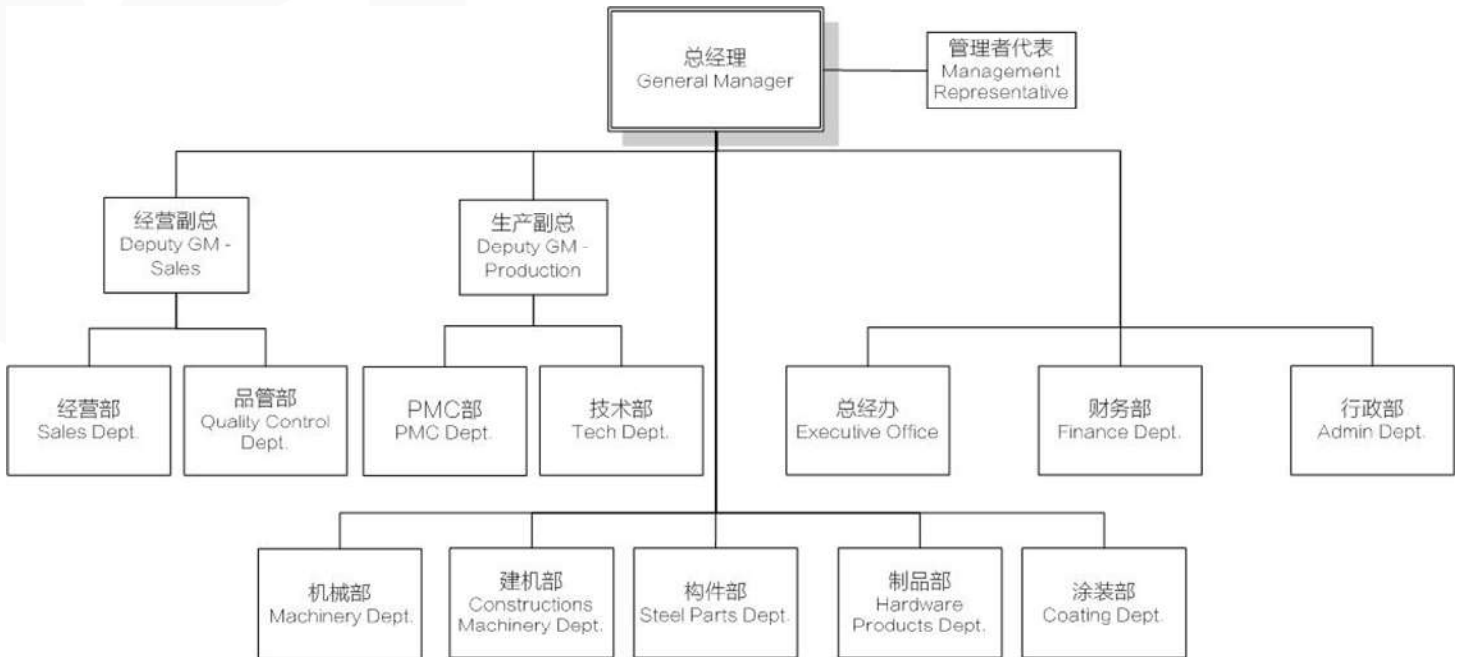
业务区域

Business Area



组织架构

Organization Chart





YEPENG
MACHINERY
业鹏机械

平面布局

Layout Plan



总面积 Total Area	83,000m ²
厂房面积 Workshop Buildings Area	50,000m ²
办公面积 Office Building Area	3,820m ²
宿舍面积 Dormitory Building Area	5,195m ²
待建空地 TBC	8,000m ²

佛山市业鹏机械有限公司
地址：广东省佛山市三水区白坭镇三水大道南 96 号 邮编：528131
电话：+86 757 83606343 电子邮箱：md@yepeng.com

传真：+86 757 87655116